

[The \(mis?\)Adventures of Shane Curd...](#)

[Home](#)[Bio](#)[Photos](#)[Travels](#)[Projects](#)[Resume](#)[Contact](#)
[Login](#) | [Rss](#)

[Adding a PCI Video Card to an Apple Macintosh G3 AIO](#)

September 26th, 2006

Details

If you have a G3 AIO, I think one of your biggest complaints will be the video. It has a slow 2 MB Rage Pro or Rage IIc onboard video controller and since the CRT is integrated, you cannot *simply* install a PCI video card... With the help of my scientist father and his new Tektronix scope, we figured out how to wire in a new video card to utilize the integrated CRT.

I can assure you that I have made this modification to my AIO and am THRILLED with the performance increase!

The upgrade I try to outline below will result in excellent 3D performance even flawless DVD-playback! One day, someone will get Quartz Extreme to work — let me know if you do... If you'd like to perform the same upgrade on your AIO, please see the "almost-walkthrough" below. It's a work in progress and I welcome your feedback.

What to Buy and Required Tools

1. A completely tested pre-manufactured solderless solution I've already made. Click [here](#) for more information and to place your order.
2. Tools: Screwdriver to open your AIO case.
3. A new ATI Radeon PCI Card for Macintosh Computers (As of 9/06 \$92 try [here](#)).

-or-

1. A VGA cable for a monitor with BNC connections. You need one of these cables with 5 leads (Red, Blue, Green, H-Sync, and V-Sync).
2. Some connectors of various kinds (see below).
3. Some spare wire, electrical tape, heat shrink tubing, zip ties.
4. Tools: Screwdriver, soldering iron, solder, solder wick, precise wire-cutters, heat gun, multimeter.
5. Lots of patience.
6. A new ATI Radeon PCI Card for Macintosh Computers (As of 9/06 \$92 try [here](#)).

Useful Software/Documentation

Note: I do not host this software or documentation. I link to other sites where I've found someone who has posted them. If the links below don't work, please use the "Contact" button above and write me an e-mail and maybe I can point you in the right direction.

Click [here](#) to get to download the Apple Factory Service Manual for the G3 AIO.

Click [here](#) to get the Apple Display Adjustment Utility for the G3 AIO (OS 9 Only).

Almost-Walkthrough

So the reason I call this an “Almost-Walkthrough” is because there is more narrative here than photos. True walkthroughs are loaded with dozens of high-res digital photos - some with fancy red arrows pointing to specific things. Unfortunately, this isn’t one of those guides. If you get into trouble, feel free to e-mail me (Contact button up above) and I will do my best to help you. [Shameless plug: Of course... The easiest way for you to get this done is to purchase one of my pre-manufactured solderless solutions already tested and ready to go! Interested? Click [here](#).]

Ok, we’re about ready to begin. Before you get started doing anything hardcore, you need to make sure of a couple of basic things. First, unscrew the back of the AIO so that the tray with the motherboard and all the goodies we’re about to modify slides out. As you slide the tray out, you may need to disconnect some wires. Once you have it out, unscrew and remove the G3 Personality Card. This is the large card that your speakers plug into from the outside. Make sure you don’t have an Apple modem installed... (If you do have an Apple modem installed, you need to remove it for this mod to work as I intended.)

Step 1:

Go ahead and install your new ATI Radeon Mac PCI card into the PCI slot closest to where the Personality card once was.

Step 2:

You’ll need to modify your Personality Card. If you have a modem installed in it, you’ll need to remove and discard the modem. If you do not have the modem (most don’t) then you’ll need to remove the “modem blank” which is just a metal slug you can twist off of the card. See below.

Before:



After:



Step 3:

Now, re-install your Personality Card with the exposed gap where your modem should be or once was.

Step 4:

Now you'll need to prepare the 5-BNC Connector VGA cable you purchased. By preparing, of course, I mean you need to take your wire-cutters and chop off each BNC connector. Strip about 2 inches of the outer insulation off of each wire and you'll see another wire inside surrounded by a metal shielding. Pull the metal shielding away from the inner wire and gather. Once you have it all gathered, twist and apply solder. This will be ground for each color. (The shielding on the V-Sync and H-Sync wires will not be used.) Now, Strip a small amount of insulation from each inner wire and apply solder to each lead.

Step 5:

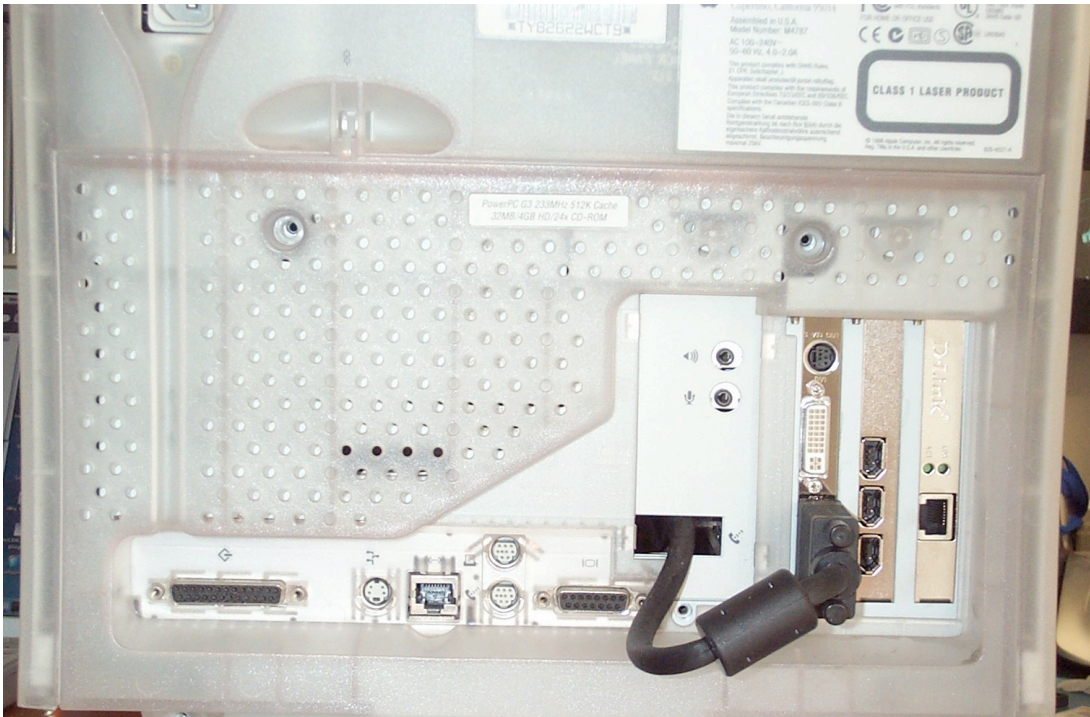
Here's a handy table showing the pinout of a standard VGA cable... You'll need this and a multimeter to continue.

	Pin 1 - Red	Pins 5,10 - Ground	Pin 8 - Blue Ground
	Pin 2 - Green	Pin 6 - Red Ground	Pin 13 - Horizontal Sync
	Pin 3 - Blue	Pin 7 - Green Ground	Pin 14 - Vertical Sync

Now that you've prepared the VGA cable as instructed above, you need to identify which wire goes where. For this, you use a multimeter set to Ohms. Touch one test lead from the multimeter to one of the 15 pins of the VGA cable (as shown above) and touch the other lead to one of the stripped and solder-coated wires you have on the other end of the VGA cable. You need to identify Red, Red Ground, Green, Green Ground, Blue, Blue Ground, Vertical Sync, and finally, Horizontal Sync. Once you identify which wire goes where, label the wire or take notes for later.

Step 6:

Connect the VGA cable to your new ATI Radeon Mac PCI video card and feed the wiring through the gap in the Personality Card as shown below:



Step 7:

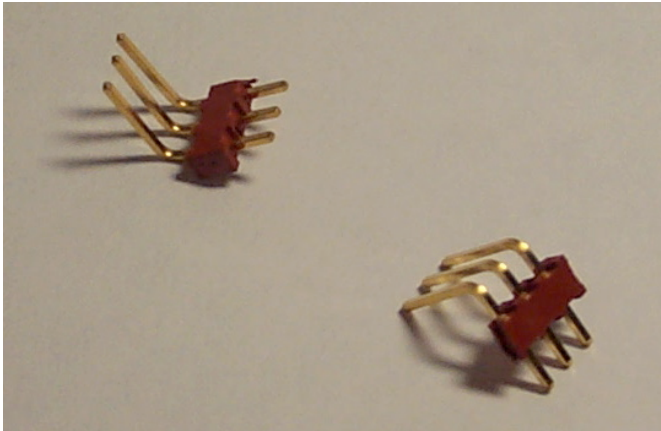
Now, onto the inside wiring... Free up the 40-pin ribbon cable (looks like an IDE cable) that normally plugs into the top of the Personality Card. Count in from the side *opposite of the red stripe* to wire number 12 and 14. Cut both of those and attach a piece of scrap wire to each lead (because they are too weak, otherwise). Wire number 12 (yellow wire in the photo below) is Horizontal Sync and wire number 14 is Vertical Sync (brown wire in the photo below). You'll want to put some kind of connector on each wire for removal so your VGA mod isn't hardwired.



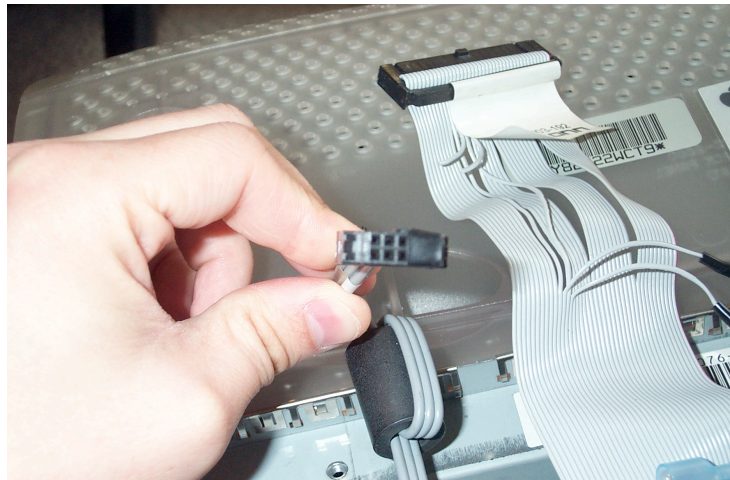
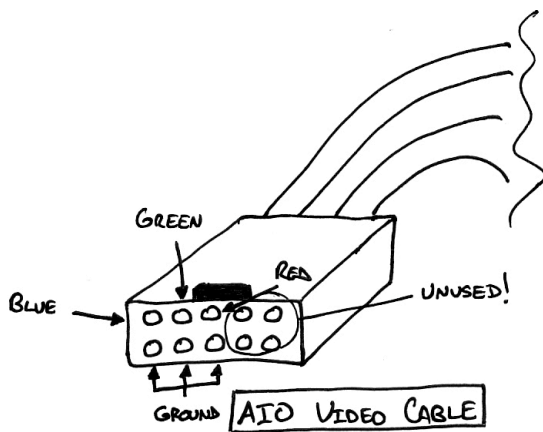
In Step 5 above, you should have identified which wire from the VGA cable you hacked up goes to Vertical Sync and which goes to Horizontal Sync. Put a corresponding connector on each of those two wires so that they can plug into your ribbon cable's connectors (as above). Note: (For these two wires ONLY you do not need the shielding and can remove and discard. The shielding around Red, Green, and Blue act as Ground which is required to be connected.)

Step 8:

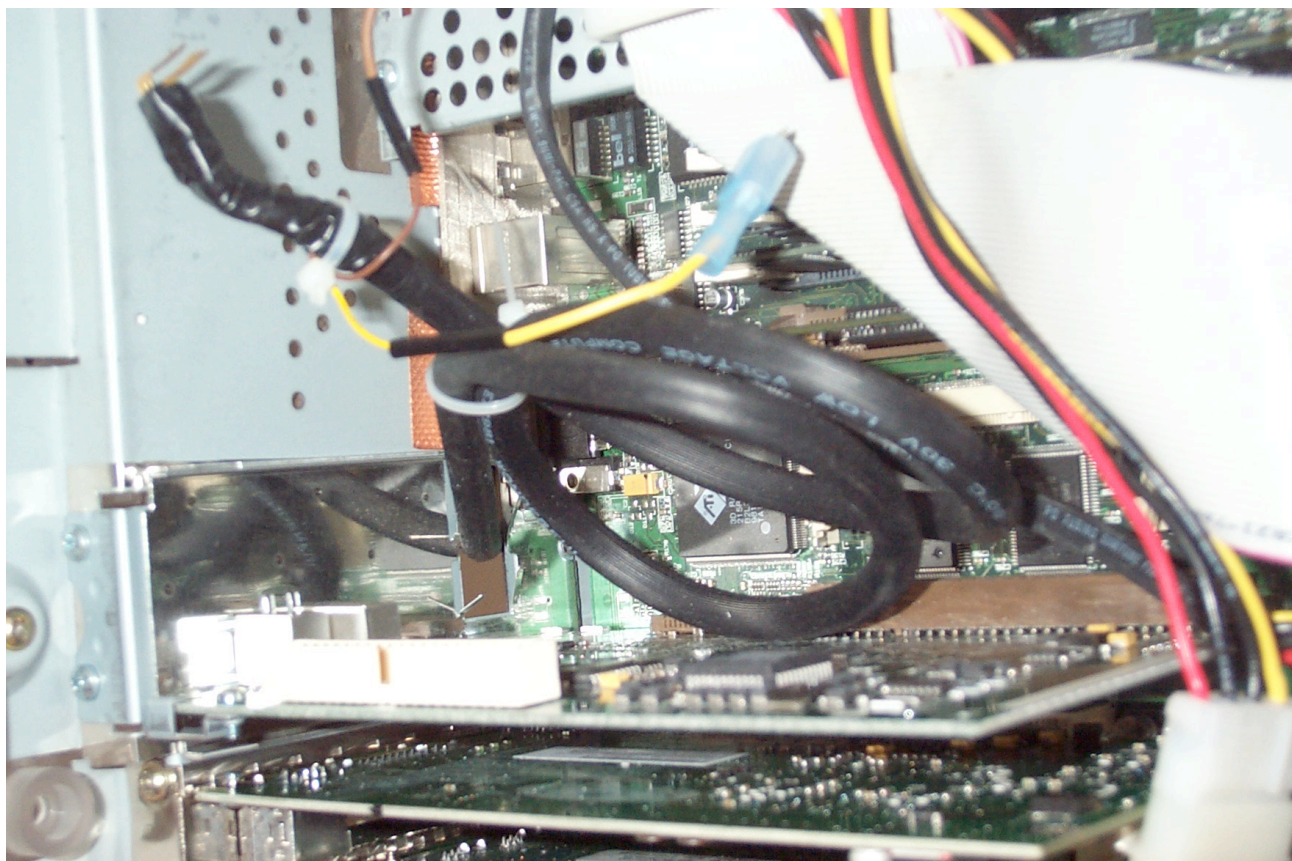
In Step 5 above, you should have identified which wires in your VGA cable are Red, Red Ground, Green, Green Ground, and Blue, Blue ground. I used connectors like you see below... I soldered Red, Green, and Blue to one connector and Red Ground, Green Ground, and Blue Ground to the other connector. I used heat-shrink tubing and electrical tape to protect against shorts.



Make sure you solder the wires to the connector in such a way that the pins will align to the correct position within the AIO video cable as shown below... Notice that four holes on the AIO video cable are unused. I covered them with electrical tape to prevent confusion should I disconnect the wires in the future.



Below is the finished product. I used a bunch of electrical tape and zip ties to tidy things up a bit... You simply connect the two Sync wires using connectors similar to the light-blue crimp-on ones I used below and then you slide the pins from the newly-modified VGA cable into the AIO video cable.



Notes:

- On your first boot after the mod, make sure you have a monitor of some sort connected to the on-board video port (via mac VGA connector in the rear). You'll have to boot up on the onboard video first and then specify that you want your new PCI video card to be "primary" in the Display Control Panel. As of yet, I have not been able to figure out how to truly disable the onboard video. Even with the internal monitor connected to your newly installed video card, Apple System Profiler still sees the on-board video as enabled and connected to a "ghost" monitor. What this means is you need to either have video mirroring turned on (makes the system slow as hell) or you need to make your new video card the primary display in the Displays Control Panel and have a "ghost" secondary monitor exist on your system. Your mouse could get lost over there!
- If you disconnect the AIO ribbon cable from the Personality card, then the on-board video becomes disabled. This leads me to believe that there are some kind of monitor sense lines on that cable which could be disconnected. Please play around and let me know what you find!! Unfortunately, you can't just leave it disconnected as it also has the speaker, volume controls, and brightness controls coming through it...
- Since the on-board video is always enabled, I cannot get Quartz Extreme to work with that patch I see floating around.. (click [here](#) for details). PLEASE LET ME KNOW IF YOU CAN DISABLE THE ONBOARD VIDEO! If you know someone at ATI with the chip datasheets or something...

Still want to do this mod yourself? Thanks to an awesome reader, Donnie, I made 5 pre-manufactured solderless solutions already tested and ready to go! So far, I have 4 left... Interested? Click [here](#).

Posted by [crzyshane](#) |

8 Comments [»](#)

1. **Mike mcManus** says

Wow. Good job. Have you had any problems with the mod? How do you get the G3 aio Service manual. It is not on thaat site anymore. Going to try this.
Going to put a faster cpu in. Will it have any effect on the mod?

November 11th, 2006 | <#>

2. **Martin Graiter** says

Hi.

Great site and great articles!

As for disabling the internal graphics card, if you can find a pinout of the graphics chip, probably some ATI chip, then look for a pin named CE.

This stands for Chip Enable and is usually negative logic. When you feed it with a constant "1" (+5V) it will be disabled.

You also need to disconnect this CE input from its normal source so that the source isn't force-fed with the same logical "1" .

I'm speculating now, but I'm sure that when the bus master hardware gets no feedback from the built-in graphics processor it will assume it to be not present.

If I could find a source for ATI graphics controller pinouts I'd gladly test this on one of my own Macs. I'm 90% sure that this will work though.

Regards, Martin, Sweden

December 2nd, 2006 | <#>

3. **[DrBunsen](#)** says

I don't think it's such a good idea to do the wiring mod while the other end is plugged into your brand new Radeon. You want to triple check the wire assignments before powering up.

And that big loop of video cable inside the computer is going to act like a coil and pick up interference. Better to make the cable shorter.

That said, well done!

January 3rd, 2007 | <#>

4. **Morgan** says

I am making a modification using a motherboardless AIO. I am going to try to do the same thing, but I was wondering if there is anything that i need to hardwire to make the monitor come on. or does it just activate with the powersupply?

January 9th, 2007 | <#>

5. **[Frank M.](#)** says

hello

i sent you a few emails before but never got a reply from you. i have tiger 10.4.8 installed and i have a Radeon 7000 ME PCI installed in my AIO and have PCI extreme installed and it runs on the

Radeon 7000 just fine. with extreme cheacker it shows as active and the onboard video as not supported. i used PCI extreme 3.1 from xlr8yourmac.com to get it working.

i have had tiger installed since 10.4.3 and have not had a single problem with tiger (runs better than 10.2 or 10.3 some times OS 9.x). i use 2 monitors one is hooked to the 7000 and the internal is still hooked to the onboard. i use to want to do this mod but i liked having extended desktop mode. the internal monitor used for the IRC chat client and the 7000 used for everything else since its way faster.

but i always thought this was a great mod to do if you dont want another monitor.

Specs of my AIO

Beige G3 AIO Rev b rom, Rav 2 mobo

G3 466mhz (bought a G3 450mhz cpu from a B&W)

448mb ram

Western Digital SE 120gb HDD

Pioneer DVR-110D

internal zip 100

internal comm slot II 56k v90 modem

1 2 port USB 1.1 PCI card

ATI Radeon 7000 Mac Edition PCI video card

ATI Rage Pro onboard video 6mb vram (2mb stock vram 4mb vram sodimm upgrade)

15" external monitor hooked to the Radeon 7000

OS 9.2.2 and OS X 10.4.8 with PCI Extreme enabled and running great with hardly any ill effects.

have burn support with the Pioneer drive in OS 9.2.2 with iTunes and finder burning with a modded PioneerCDR Authoring support extension, modded that file to also support the 111D drives. installed intech CD/DVD speed tools 6.0 to fix the wake up freeze caused by the stoel apple cd/dvd driver with the Pioneer DVR-110D

January 21st, 2007 | <#>

6. [Frank](#) says

i have PCI Extreme enabled on my AIO and im using a ATI Radeon 7000 PCI video card and the onboard video (yea the onboard video wont support PCI extreme but the 7000 does and works great. have had no problems running it. i have 10.4.8 installed on my AIO i used PCI extreme enabler 3.1.

i used the PCI extreme cheack app and shows the 7000 being enabled and shows a great improvement in GUI speed and other stuff has also gained in performance. i was going to do this hace on my AIO but i grew on having extended desktop mode. i like having the room

January 24th, 2007 | <#>

7. [Andrew](#) says

Where/how did you find the pinout for the AIO connector? I'm looking for the Sync Ground on the card...

February 2nd, 2007 | <#>

8. [Seth B](#) says

Frank M: I am just getting started in doing some upgrades on my AIO. I was wondering if you could give me some more information on some of upgrades you did, like HDD, DVD-R, Proccessor, etc... Any help would be greatly appreciated.

March 8th, 2007 | <#>

Leave a comment

<input type="text"/>	Name (required)
<input type="text"/>	Mail (will not be published) (required)
<input type="text"/>	Website

:mrgreen: :neutral: :twisted: :shock: :smile: :??? :cool: :evil: :grin: :oops: :razz: :roll: :wink: :cry: :eek: :lol: :mad: :sad:

Submit Comment

[RSS feed for these comments.](#) | [TrackBack URI](#)

Translate to English	Übersetzen Sie zum Deutsch/German	Traduzca al Español/Spanish	Traduisez au Français/French	Traduca ad Italiano/Italian
Traduza ao Português/Portuguese	日本語に翻訳しな さい /Japanese	한국어에게 번역하 십시오/Korean	中文翻译/Chinese	

Events/Travel

May 2007

M	T	W	T	F	S	S
	1	2	3	4	5	6
7	8	9	10	11	12	13
14	15	16	17	18	19	20
21	22	23	24	25	26	27
28	29	30	31			

Recent Posts

- [Since when did a Vodka Cranberry become a Cape Cod?](#)
- [WTF is LazyTown?](#)
- [Here we go again! Night Hawks LA Event - June 18th](#)
- [Why does everyone love eHarmony? Perhaps it's all about Attitude and the \\$50/mo. price tag!](#)
- [Tony Has Left The Building!](#)
- [Paulie Shore Beats... err... Starves His Dog!](#)
- [Night Hawks LA's "Le Cirque Du Titty! Titty! Bang! Bang!"](#)
- ["You should say 'thank you,' sir." - "What is Berlin, is that a country?" - And other reasons why I hate Los Angeles.](#)
- [Lunch in Poland](#)
- [Saturday Night In Chicago](#)

<input type="text"/>	Search
----------------------	--------

[Powered By: WordPress](#) | **[Original Design By: Kaushal Sheth](#)**